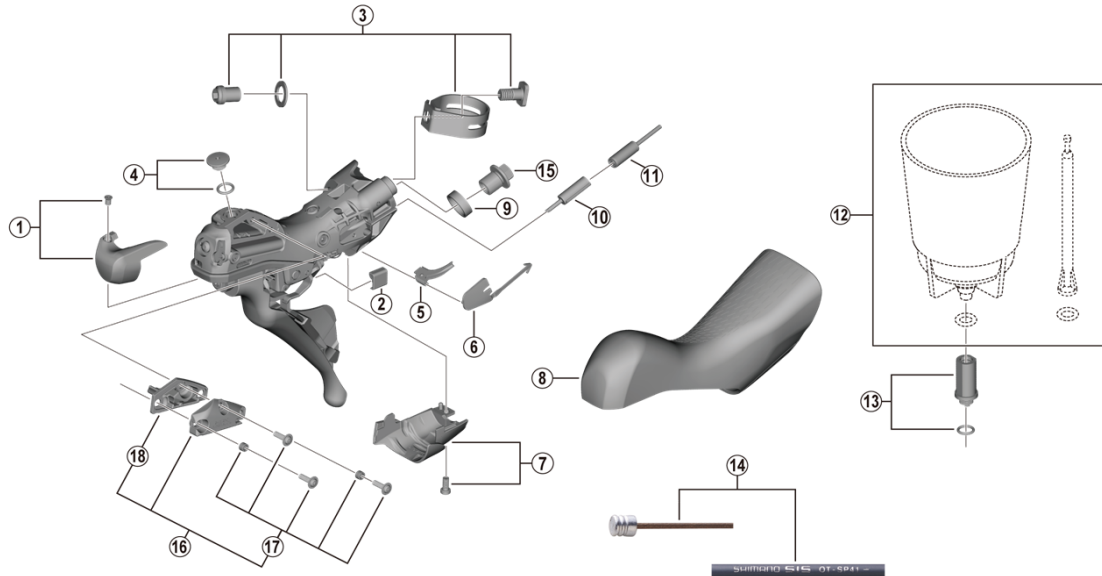


ULTEGRA Dual Control Lever (For Disc Brake)
ST-R8020 (2x11-speed)



ST-R9 120

ITEM NO.	SHIMANO CODE NO.	DESCRIPTION	INTERCHANGEABILITY	
1	Y0E098020	Right hand name plate R and fixing screw	B	
	Y0E198010	Left hand name plate L and fixing screw	B	
2	Y63X80000	Main lever support R	A	
	Y63X80010	Main lever support L	A	
3	Y0E098030	Clamp band unit diameter (23.8 - 24.2 mm)	B	
4	Y0C698030	Bleed screw and O-ring	A	
5	Y07X75000	SL cable guide R	A	
	Y07V75000	SL cable guide L	A	
	Y00E75000	SL cable cover R	A	
6	Y0C574000	SL cable cover L	A	
7	Y0C698040	Right hand unit cover R and fixing screw	A	
	Y0C598020	Left hand unit cover L and fixing screw	A	
8	Y0E098010	Bracket covers (pair)	B	
9	Y0C514000	Joint support ring	A	
10	Y63Z27000	Outer cap with short tongue for ST	A	
11	Y63Z28000	Outer cap with long tongue	A	
12	ESMDISCBP	Funnel and oil stopper	A	
13	Y0C698050	Funnel adapter and O-ring	A	
14	Y63Z98910	OT-SP41 polymer coated shift cable sets (black) • Outer cap with short tongue for ST-9000 (2 pcs.) • Outer cap with long tongue (3 pcs.) • Sealed outer cap for rear Derailleur (1 pc.) • Inner end cap (2 pcs.) • Cover with tongue for rear derailleur (1 pc.)		
	Y63Z98920	OT-SP41 polymer coated shift cable sets (white) • Outer cap with short tongue for ST-9000 (2 pcs.) • Outer cap with long tongue (3 pcs.) • Sealed outer cap for rear Derailleur (1 pc.) • Inner end cap (2 pcs.) • Cover with tongue for rear derailleur (1 pc.)		
	Y63Z98930	OT-SP41 polymer coated shift cable sets (red) • Outer cap with short tongue for ST-9000 (2 pcs.) • Outer cap with long tongue (3 pcs.) • Sealed outer cap for rear Derailleur (1 pc.) • Inner end cap (2 pcs.) • Cover with tongue for rear derailleur (1 pc.)		
	Y63Z98940	OT-SP41 polymer coated shift cable sets (high-tech gray) • Outer cap with short tongue for ST-9000 (2 pcs.) • Outer cap with long tongue (3 pcs.) • Sealed outer cap for rear Derailleur (1 pc.) • Inner end cap (2 pcs.) • Cover with tongue for rear derailleur (1 pc.)		
	Y63Z98980	OT-SP41 polymer coated shift cable sets (orange) • Outer cap with short tongue for ST-9000 (2 pcs.) • Outer cap with long tongue (3 pcs.) • Sealed outer cap for rear Derailleur (1 pc.) • Inner end cap (2 pcs.) • Cover with tongue for rear derailleur (1 pc.)		
	Y63Z98990	OT-SP41 polymer coated shift cable sets (green) • Outer cap with short tongue for ST-9000 (2 pcs.) • Outer cap with long tongue (3 pcs.) • Sealed outer cap for rear Derailleur (1 pc.) • Inner end cap (2 pcs.) • Cover with tongue for rear derailleur (1 pc.)		
	Y63Z98991	OT-SP41 polymer coated shift cable sets (blue) • Outer cap with short tongue for ST-9000 (2 pcs.) • Outer cap with long tongue (3 pcs.) • Sealed outer cap for rear Derailleur (1 pc.) • Inner end cap (2 pcs.) • Cover with tongue for rear derailleur (1 pc.)		
	Y63Z98992	OT-SP41 polymer coated shift cable sets (yellow) • Outer cap with short tongue for ST-9000 (2 pcs.) • Outer cap with long tongue (3 pcs.) • Sealed outer cap for rear Derailleur (1 pc.) • Inner end cap (2 pcs.) • Cover with tongue for rear derailleur (1 pc.)		
15	Y8RD02000	Flange flare nut (M9/black)		
* 16	Y0C698060	Right hand lid unit		
* 16	Y0C598030	Left hand lid unit		
* 17	Y0C698070	Lid fixing screw (3 pcs.) and lid spacer (2 pcs.)		
* 18	Y0C678000	Diaphragm R		
* 18	Y0C578000	Diaphragm L		

A: Same parts.

B: Parts are usable, but differ in materials, appearance, finish, size, etc.

Absence of mark indicates non-interchangeability.

Specifications are subject to change without notice.

Jun.-2021-4245E

© Shimano Inc. I

SHIMANO